



Telkom EASY SMS INSTALLATION GUIDE

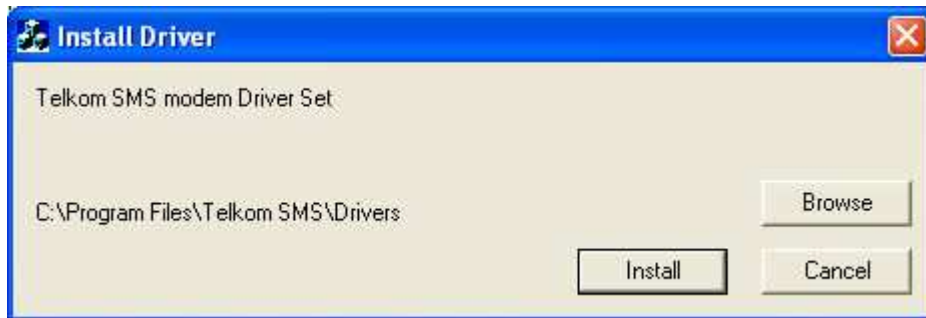
**DO NOT CONNECT THE MODEM TO THE COMPUTER BEFORE
INSTALLING THE SOFTWARE**

Installing the Software

1. Insert the CD into your CD drive.
2. The install program should auto execute. Follow the install instructions to install the program.

Installing the Modem

1. Using the Windows taskbar select **Start, All Programs, Telkom SMS, Telkom SMS Driver Installation.**



2. Click on the install button (on the displayed form) to pre-install the modem USB drivers. Close the form once completed.



3. Connect the Telkom SMS modem to the computer using the supplied USB cable.
4. The modem will be automatically detected.

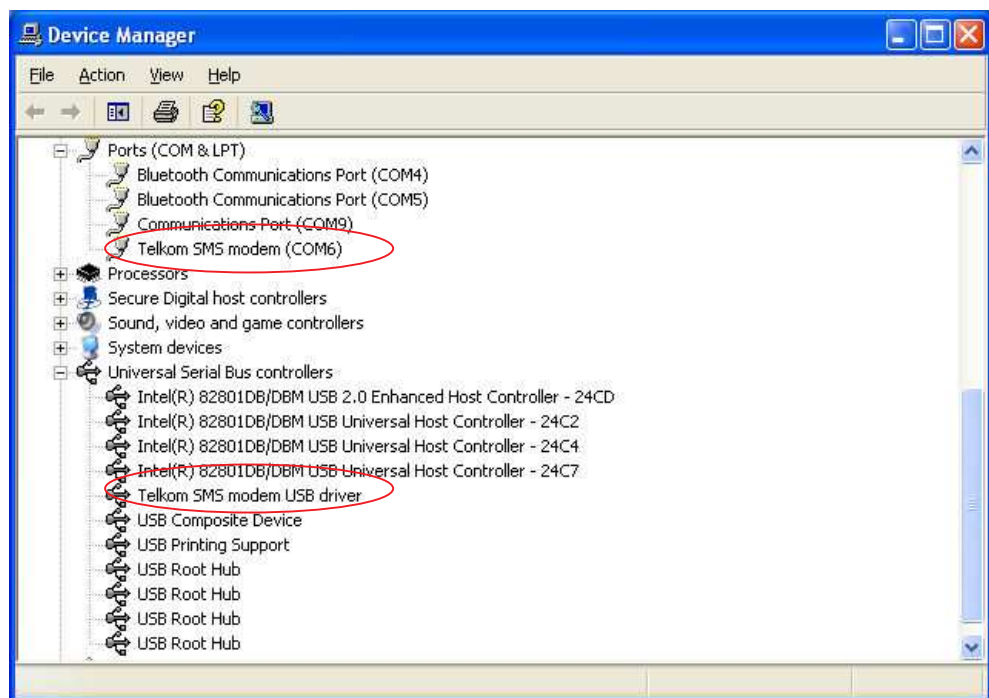
5. When the new hardware wizard form is displayed follow the instructions below to install for the version of Windows that is installed on your PC.

Note1: Windows will display the install driver form twice as two USB drivers need to be installed. Simply follow the same procedure, as listed below, to complete both driver installations.

Note2: Should a Windows Logo warning be displayed, please select *Continue Anyway*.



Note3: Once the drivers are installed, they can be viewed using the Device Manager in:
- Ports (COM & LPT) as **Telkom SMS modem (COMx)**.
- Universal Serial Bus controllers as **Telkom SMS modem USB driver**.



Windows XP

1. When the 'add new hardware' form appears and asks to connect to windows to search, select *No not this time* and then click *next* to start the installation.



2. Select *Install the software automatically* and then click *next*.



3. Click *finish* to complete the installation. (See note 1/2)

Found New Hardware Wizard



Completing the Found New Hardware Wizard

The wizard has finished installing the software for:



Telkom SMS modem USB driver

Click Finish to close the wizard.

< Back

Finish

Cancel

Windows 2000

1. Windows 2000 should automatically install the drivers without any intervention require. If the 'Add New Hardware' form is displayed please ensure that you have preinstalled the drivers as described in the section INSTALLING THE MODEM.

Windows 98/ 98SE / ME

1. When the 'add new hardware' form appears click *next* to start the installation.



2. Select *search for driver* and press *next*.



3. Select *specify location* and use the browse button to navigate to the C:\Program Files\Telkom SMS\Drivers directory on your CD. Click OK.



4. Click *next* to start the install, *next* again and finally *finish*.





5. The driver should now be installed. (See note 1/2)

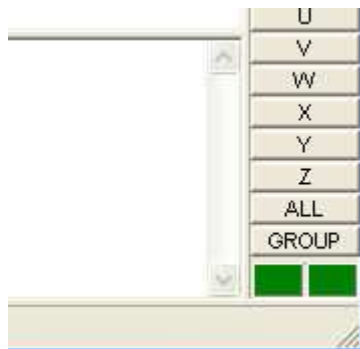
Other Modem Connections

Connect the telephone line to the line input of the modem and your telephone into the telephone input on the modem. The record output of the modem is an optional connection that can be connected to your PC's soundcard record input connector should you require call recording functionality.

Running the Program

The software and modem drivers will now be installed and active and the Easy SMS application can be run by using the Windows taskbar select **Start, All Programs, Telkom SMS, Easy SMS**.

To check if your drivers are installed correctly, look at the modem indicators on the bottom right of the Easy SMS application form (as shown below). These should flicker from green to red when the application is started or if you click on the **[GET]** button on the application TaskBar.



Please ensure that the IdentiCall (CLI) and SMS services are enabled on your telephone line prior to sending SMS's. Contact Telkom on 10219 to enable this service.

Help files and Support

Integrated help is available when running the program and is accessed from the program Toolbar using the *Help, Telkom SMS Help* menu button. Should you wish to print the help file it can be found in C:\Telkom SMS\Docs.

Modem drivers are also stored on the CD in the Drivers directory.

Should you experience problems with this installation, please contact Technical Support using the telephone number listed on the product packaging.